

- + Included
- Not included
- V Can be ordered additionally
- T Standard houses included in the price,
with change and optional for individual projects

*Package information for residences, cottages and sauna houses

Designing

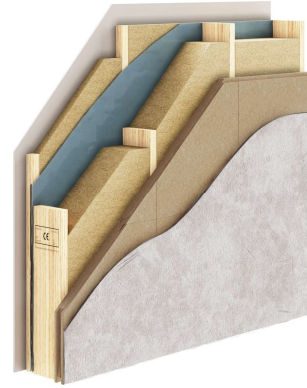
	Factory package 1	Factory package 2	Factory package 3
Sketch drawings (for Timberelement standard house)	+	+	+
Installation drawings	+	+	+
Electrical project	V	V	T
Ventilation project			
Heating project	V	V	V
Water and canal project			
Applying for a building permit with an energy label	V	V	V

* Non-constructive changes in the project by the client, as additional work based on the hourly price



Outer wall layers (lining board/façade tile)

21x145mm, horizontal in UYVK facade board	+	+	+
28x45mm distance strip for ventilation	+	+	+
Windbreak membrane	+	+	+
9 mm windproof plasterboard	+	+	+
45x195mm (C24) wooden frame (for cottages/sauna houses 45x145mm)	+	+	+
200mm Knauf 035/036 mineral wool (150mm for cottages/sauna houses)	+	+	+
0.2mm vapor barrier film	+	+	+
45x45mm additional frame	+	+	+
50mm Knauf 035/036 mineral wool	-	-	+
12.5mm plasterboard, standard	-	-	+



Exterior wall layers (Plaster)

60 Steico protect	+	+	+
45x195mm (C24) wooden frame (for cottages/sauna houses 45x145mm)	+	+	+
200mm Knauf 035/036 mineral wool (150mm for cottages/sauna houses)	+	+	+
0.2mm vapor barrier film	+	+	+
45x45mm additional frame	+	+	+
50mm Knauf 035/036 mineral wool	-	-	+
12.5mm plasterboard, standard	-	-	+



Layers of load-bearing interior walls

12.5mm plasterboard, standard	-	+	+
45x145mm wooden frame, C24	+	+	+
150mm Knauf 037 mineral wool	-	+	+
12.5mm plasterboard, standard	-	-	+



Layers of non-load-bearing interior walls

12.5mm plasterboard, standard	-	+	+
45x95mm wooden frame, C24	-	+	+
100mm Knauf 037 mineral wool	-	+	+
12.5mm plasterboard, standard	-	-	+

Extras:

Rodent mesh in the perimeter of the outer wall	+	+	+
Outer lining board 1x primed, 1x painted, tikkurila color	+	+	+
Wool tapes on two sides of the element	+	+	+
A more moisture-resistant plasterboard is used in wet rooms	-	+	+
In addition, OSB was installed in the back wall of the kitchen and the walls of utility rooms	-	-	+

Elements of the roof and false ceiling



Intermediate ceiling layers (on 2- and more-story buildings)

PLP board 22mm	+	+	+
Wooden frame 45x245mm	+	+	+
Mineral wool Knauf	+	+	+
22x100mm reed	+	+	+



Gable roof/Flat roof layers

45x45mm distance strip for ventilation	+	+	+
Roof underlay	+	+	+
Full square table 22x100	+	+	+
45x390mm (C24) composite rafter (45x245mm for cottages/sauna houses)	+	+	+
400mm Knauf 035/036 mineral wool (250mm for cottages/sauna houses)	-	+	+
0.2mm vapor barrier film	-	+	+
45x45mm additional frame	-	+	+



Roof truss solution

Roof structure calibrated planed wood (C24) roof trusses with spike plate joints. All necessary loads have been taken into account in the Fermi strength calculations.	+	+	+
End triangles of the roof	+	+	+

Extras

Electricity

Electricity (includes electricity and throats)	-	-	+
--	---	---	---

Openings

PVC windows (3x glass) with installation. White on the outside, white on the	v	v	v
--	---	---	---

*The doors and windows of the terrace all open inwards.

Factory packages do not include:

Transport or installation of elements, trusses and other materials

Fasteners for connecting elements

Sale of additional material:

We sell additional materials outside of the contract according to the quantities specified by the customer and payment is made on the basis of a separate invoice.

Payment terms:

50% at the conclusion of the contract, before the production of the elements

50% on completion of elements
